

Your Structural On- & Offshore Partner



WWW.ROMETAL.NL

Specialist in equipment for:

Offshore | Heavy Lifting | Cranebuilding | Dredging | Reinstatements | On-site Services



Welcome

We're pleased to introduce Rometal with this brochure. Established in 2000, we're still a young company, but we're growing every year – step by step. We've proven that our partners can rely on us for all kinds of (high tension) steel structures.

With two facilities – in The Netherlands and Romania – we can serve our customers in a flexible and cost efficient way. Today we deliver, starting from a drawing, complete (finished) products. Our work complies with the rules and regulations of different kinds of classification societies.

Furthermore we've developed considerable expertise in testing, modifications, repairs and logistics. Also for integrating hydraulics and electrical systems, we can be your partner. Delivery of an end-to-end finished product has become a part of our track record.

Our existing customers are mainly in the heavy lift, offshore, cranebuilding and maritime related industries. Our aim for the future is further consolidate our company and continue delivering the highest standards for our existing and future customers.

Enjoy reading this brochure. For more details, you can visit our website. I'd also be delighted to welcome you at one of our facilities.

Best regards,

Gert-Jan van Utrecht
Managing Director

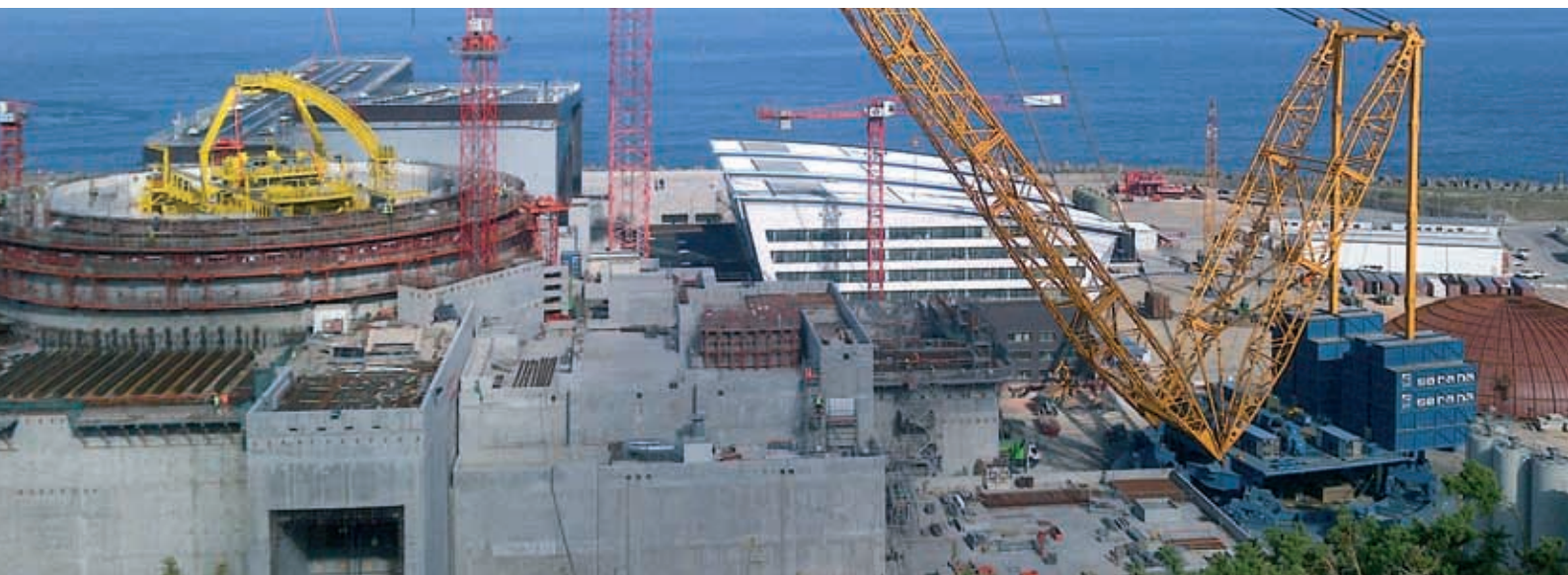


Content

Welcome.....	2
Content	3
Certified for	4
Capabilities	4
Services & Products	5
Rometal's Offshore Structures.....	6



“
Your thoughts,
our solutions.”



Certified for

**High Tension Steel
S 355**



**High Tension Steel
Ste 690**



**High Tension Steel
Ste 890**



**High Tension Steel
S 960**



Capabilities

Flexibility

Our company is well-known for our hands-on mentality. We are able to serve our customers in different kind of ways.

Welding Services

We also provide on-site welding services.

Repairs & Modifications

We can also provide repairs and modifications. More and more customers know how to find us for these kind of questions.

Storage & Logistics

Temporary storage of (finished) products in Moerdijk! Deliveries all over the world by road and even by water can be a part of our scope.

Total System Integration

Together with our customers we do have quite some experience in intergration of electric- and hydraulic components including the necessary function testing.

Testing of Equipment

Mainly for heavy lift applications load testing has been required according to the classification society involved.

On-site Services

More and more customers are asking for our services on-site.

Blasting & Painting

Approved supplier for applying paint systems under the guarantee of all the paint suppliers.

Services & Products

(High tension) Steel Constructions for the Crane Industry



- Manufacturing
- Assembling
- Welding
- Machining
- Blasting & Painting
- Transportation & Packaging
- Procurement
- Documentation
- Quality Reports
- Traceability System

On-site Welding & Repair Services



- Welding
- On-site Machining
- Painting
- Documentation

Seafastening, Grillages & Deck Equipment for Offshore & Marine



- Manufacturing
- Assembling
- Welding
- Blasting & Painting
- Transportation & Packaging
- Documentation
- Quality Reports
- Traceability System
- Machining

Reinstatements & Removals



- Gouging
- Scrapping
- Lifting
- Cleaning
- Paint repairs
- Transportation (water & road)

Heavy Lift Equipment



- Manufacturing
- Assembling
- Welding
- Machining
- Blasting & Painting
- Transportation & Packaging
- Documentation
- Quality Reports
- Traceability System

Complete Products



- Manufacturing
- Assembling
- Welding
- Machining
- Blasting & Painting
- System & Load Testing
- Transportation & Packaging
- Documentation
- Quality Reports
- Traceability System

Winches



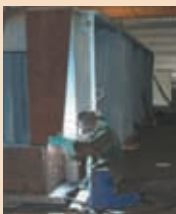
- Manufacturing
- Assembling
- Welding
- Machining
- Blasting & Painting
- Transportation & Packaging
- Documentation
- Quality Reports
- Traceability System

Load & System Tests



- Load Testing according to Related Class Societies
- Hydraulic System Testing
- Electronic System Testing

Modifications of All Kind of (High Tension) Steel Constructions



- Manufacturing
- Assembling
- Welding
- Machining
- Blasting & Painting
- Transportation & Packaging
- Documentation
- Quality Reports
- Traceability System

Storage & Logistics



- In our Facilities
- Fenced Areas

Rometal's Offshore Structures

FLEXIBILITY KEY IN HIGH TENSILE STEEL FABRICATION

WORDS BY JOHN GAULDIE



Managing Director Gert-Jan van Utrecht came from the crane world when he founded Rometal in 2000. Unsurprisingly, the Dutch steel specialist rapidly built up a reputation for delivering high quality hoisting, crane and heavy lift equipment such as lifting beams, spreaders, winches, jacking systems, seafastenings and deck equipment. Now Rometal's flexibility is behind a growing reference list of complex offshore structures including heavy lift push-up jacks, mooring anchors, pile gripper frames and all kinds of offshore handling systems.

"We're still a relatively young fabrication yard operating in the Dutch, Belgian and North Sea market," Mr Van Utrecht explained. "But when I show our current references, projects we have already delivered, I think our offshore experience speaks for itself. Our clients are not just the top OEMs and engineering companies, but also the main international heavy lift and marine contracting players."

Characteristics

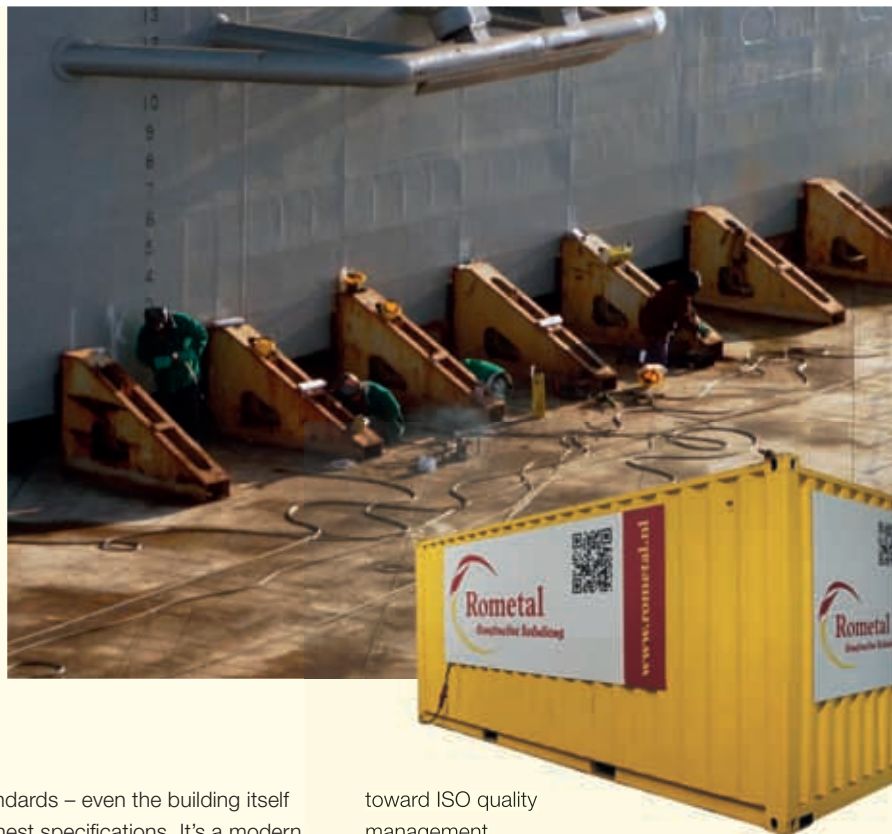
The company supplies all kinds of steel structurals – with a focus on high tensile steel S690, S890 and S960 and meets the highest on- and offshore requirements. The organisation has built up its ability to provide all required documentation. Traceability, all necessary reports, certificates, WPQR, WPS are Rometal standards.

Their high quality standards allow them to serve both the on- and offshore industry, complying with the rules and regulations stipulated by all classification societies. As well as new structures, Rometal does repairs, modifications, tests and on-site services.

"It comes down to offering clients that flexibility," Commercial Director Martijn van Manen stated.

He illustrated Rometal's flexible approach with the recent delivery of a pile gripper frame for a wind installation jack-up vessel. "This is a large, complex structure with a lot of hydraulic and electrical hardware. We assembled it at a location chosen in close consultation with the client. And we fabricated





the elements in two different locations – partly in our facility in Moerdijk in the Netherlands and partly in our plant in Brasov, Romania. With two locations as well as on-site services, we are flexible. And that translates into short turnaround times and cost savings for our clients.”

Facilities

In Moerdijk, Rometal’s head office operates a production facility spanning approximately 2,000 m². In 2008 Rometal expanded with a brand new 5,000 m² plant in Brasov, Romania. The fast growing company recently expanded their Romanian facility with another 2,500 m². Compared with the rest of the European Union, Romania obviously has lower operating costs. But Mr Van Manen highlights another important consideration – the pool of highly skilled workers in Romania.

“We’ve taken some of our main clients from the Netherlands to visit the plant in Brasov. It’s immediately clear that we’re working to the

highest standards – even the building itself has the highest specifications. It’s a modern, efficient workplace. Things like underfloor heating to prevent snow build-up for pedestrians – it illustrates our commitment to a state-of-the-art and safe working environment.”

The facility also has its own cutting machinery, a dedicated shotblasting and paint shop with air filtration, plate nesting equipment and inhouse engineering support.

The two locations are fully linked with dynamic software, so they both work from the same plans and ensure a faultless delivery process. Together, Rometal’s facilities can manufacture all kinds of structurals up to complete systems, including hydraulics, electrics, system testing and (load) tests.

Safe Pair of Hands

Over the years Rometal has invested heavily in developing its welding procedures as well as its facilities. Today the company is working

toward ISO quality management certification and building up its inhouse engineering support. Mr Van Utrecht: “Certification and inhouse project support are becoming more and more important for our clients looking for a safe pair of hands. We get the job done, we stand behind our products. And, as a young flexible and still growing company, we keep on looking to the future to improve ourselves at all levels.”

i. www.rometal.nl



Rometal's Facility in Romania: 7,500m²



Rometal's Facility in the Netherlands: 2,000m²

With two facilities as well as on-site services (above), Rometal's flexibility translates into short turnaround times and cost savings.



Patrijsweg 10
4791 RV Klundert
The Netherlands
T +31 (0)168 331 490
F +31 (0)168 331 494
E sales@rometal.nl

WWW.ROMETAL.NL

